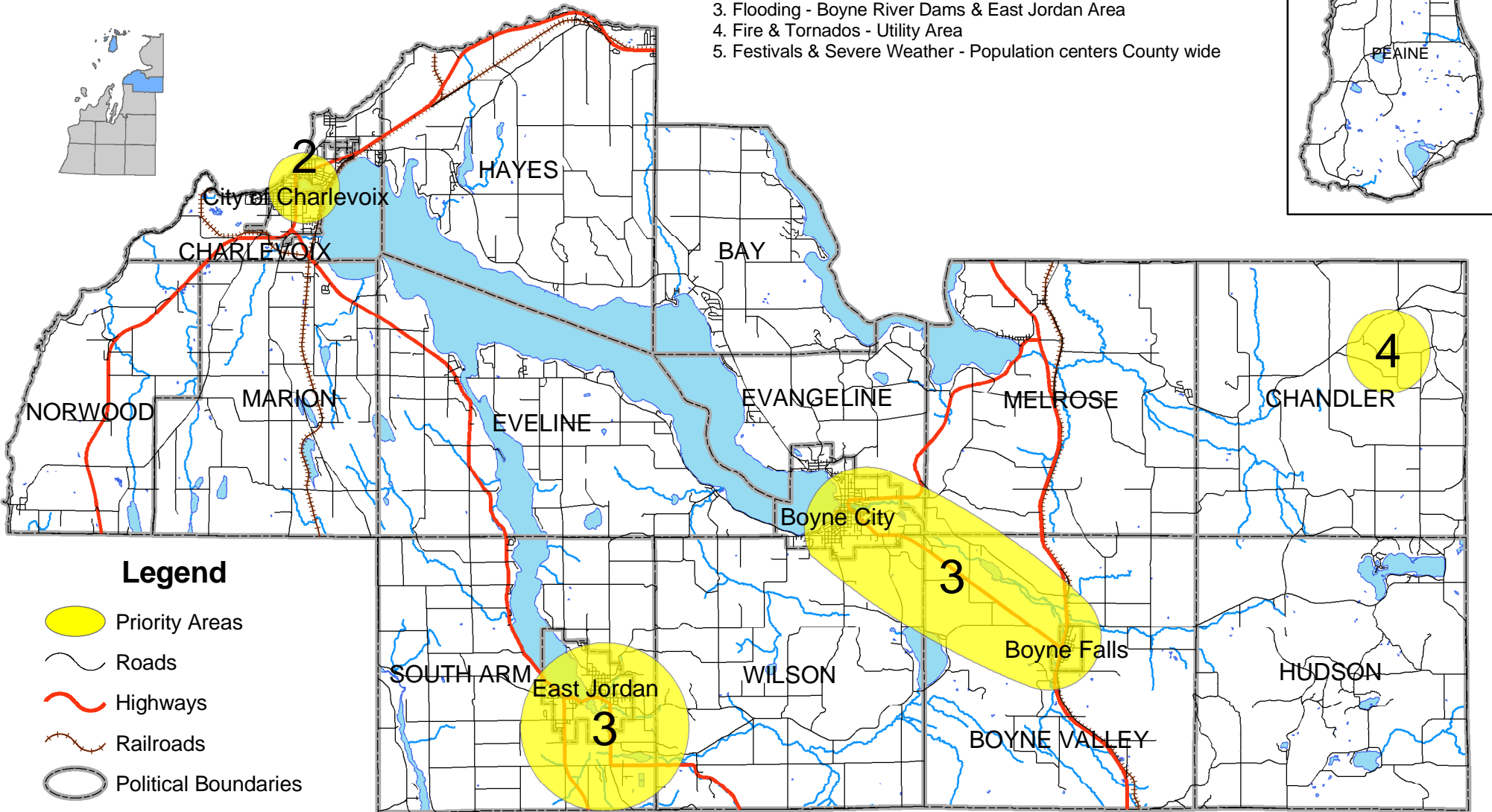
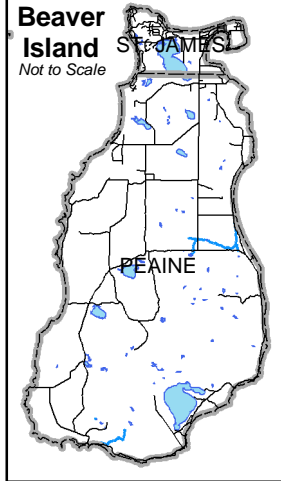


Hazard Mitigation Planning Project

Charlevoix County Priority Areas

Priority Areas:

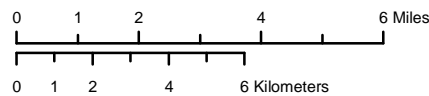
1. Severe Winter Storms - County wide (utilities)
2. High Winds & Severe Weather - City of Charlevoix (around bridge over US 31)
3. Flooding - Boyne River Dams & East Jordan Area
4. Fire & Tornadoes - Utility Area
5. Festivals & Severe Weather - Population centers County wide



Legend

- Priority Areas
- Roads
- Highways
- Railroads
- Political Boundaries
- Rivers/Creeks
- Lakes/Ponds

a



Map produced by:
 Northwest Michigan Council of Governments

Map Date: 8 March 2005
 Path: M:\GIS\Projects\HazardMit\Chabase_Priorities_Letter.mxd